

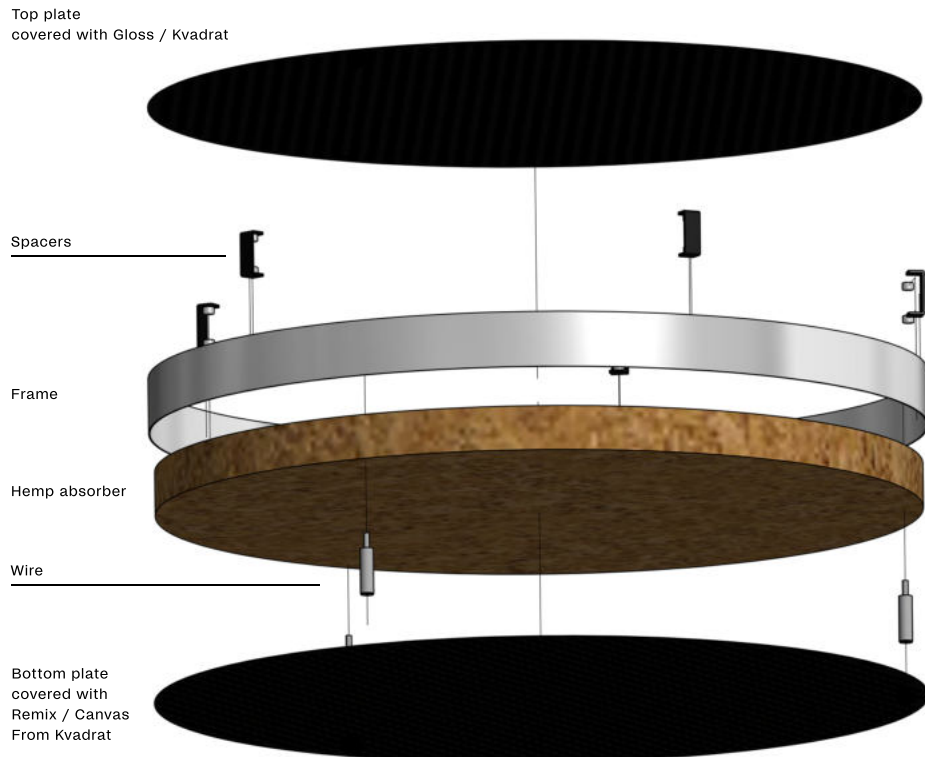
MoM

NEW ACOUSTIC PENDANT

EMBACCO

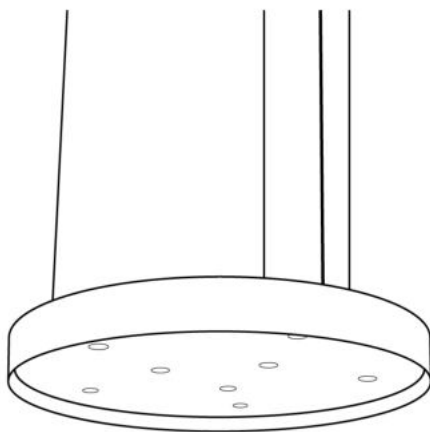


MoM is an acoustic pendant. The 8 directed light tubes give a warm clear light with high brillians and colour rendering . Ø 80 cm / h: 9

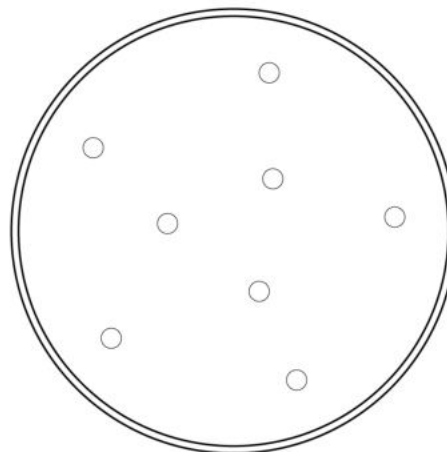


Product specifications

Dimensions	Ø 800 x H 90
Materials	Powder coated matt metal Front: Remix /Canvas textile / Kvadrat Tubes: Matt coated aluminium Top plate: Gloss black from Kvadrat, cleanable Suspension: Pendel suspended in 3 wires and 2 x 0,75 black textile cables
Accessories	Inserts in light gold.
Beam angle	24 dgr.
LED light	Cree 1306 diodes = 4.880 lumen, RA 97 . 2700 K
Dim-able versions	No-dimmable, DALI dim or Push dim
Weight	12,4 kg Class IP: 23

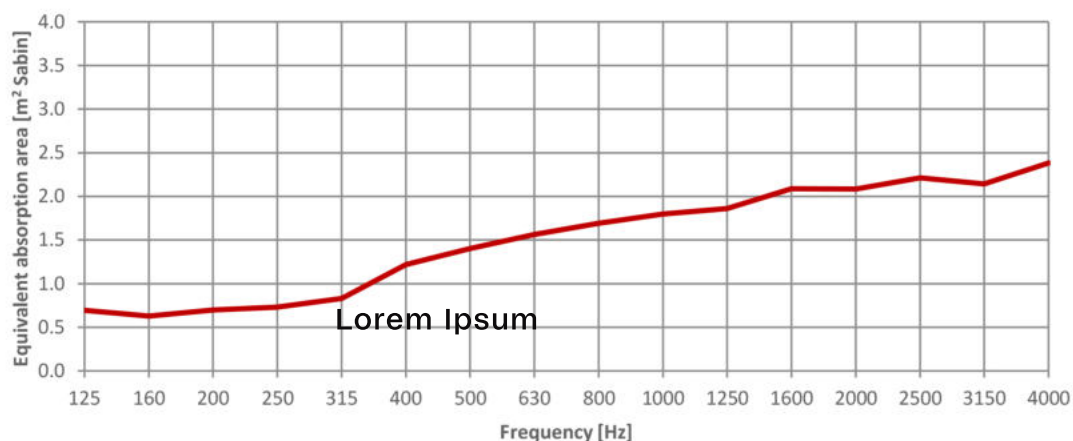


Ø 800 x H 90



Ø 800 x H 90

MoM



sound measurement.

ON THE LAST PAGE YOU FIND ALL OUR STANDARDS . PLEASE FEEL FREE
TO COMPOSE AS YOU WISH.

FIRST YOU CHOOSE FRAME with CODE F1, F2 or F3 AND NEXT
COLOUR ON SPOT - USE CODE S1-S2 OR S3 AND
FINALLY THE TEXTILE CODE IN-BETWEEN.

EXAMPLE 1: BLACK FRAME/SPOT + CANVAS 114 T1.114.S1
WHITE FRAME/SPOT + REMIX 823 T2.823.S2



F1-BLACK



F2-WHITE



F3-GOLD



S1-BLACK



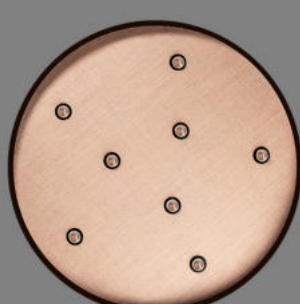
S1-WHITE



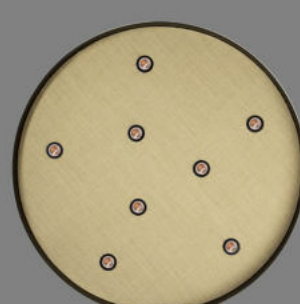
S3-GOLD



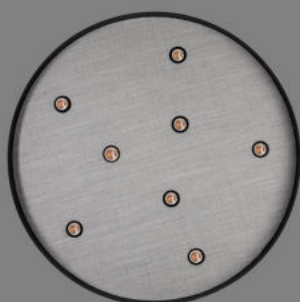
S1-BLACK



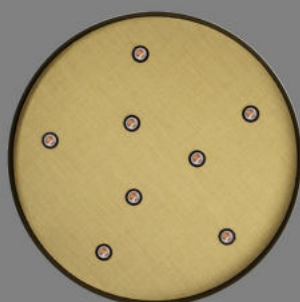
S1-BLACK



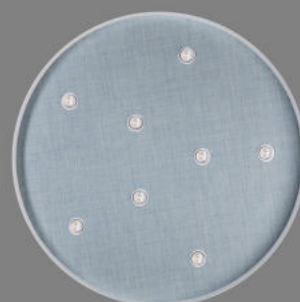
S1-BLACK



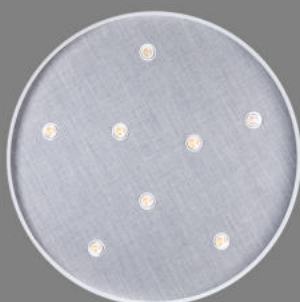
S1-BLACK



S1-BLACK



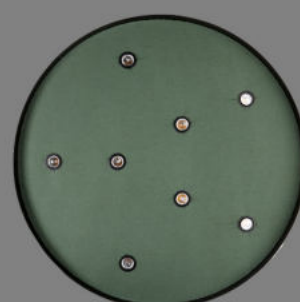
S1-BLACK



S1-BLACK



S1-BLACK



S1-BLACK